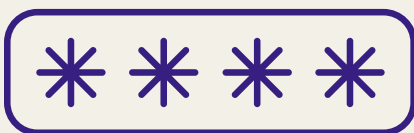
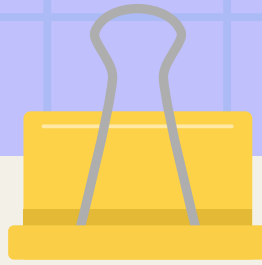
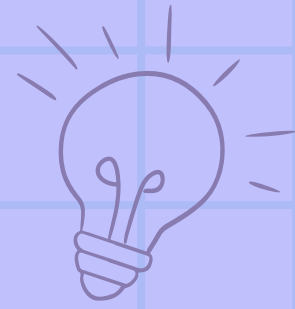
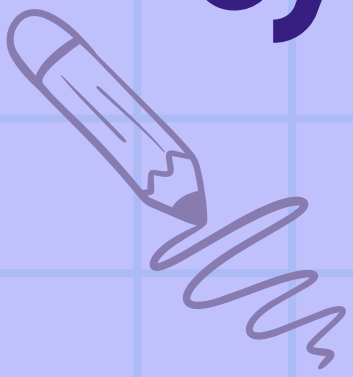


Back-to-school cybersecurity basics



Make sure your passwords are complicated, strong, and unique.



Set up automatic updates to protect your devices from the latest cyber threats.



Verify suspicious sources asking for personal information or money by contacting abuse@rutgers.edu.



Never accept a Duo push notification that you haven't requested.



Be careful of what you share online and pay attention to who follows you.

