

GONE SPEAR PHISHING!



What is spear phishing?

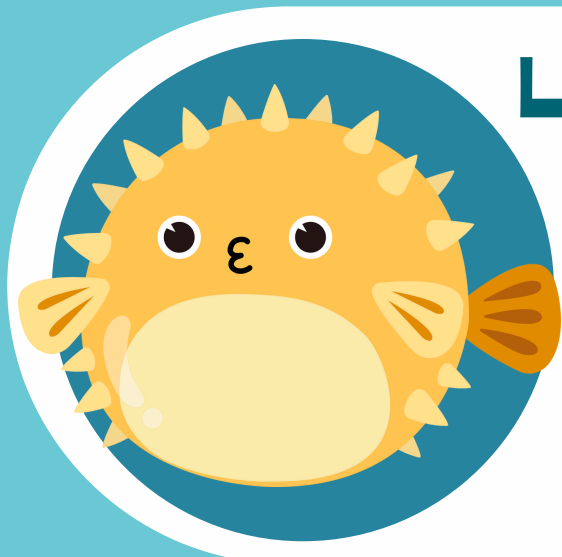
Cybercriminals disguise themselves as reputable companies or individuals to steal information.

What are some risks?

Risks include system or data compromise, identity theft, financial loss, and more.



HOW TO PROTECT YOURSELF:

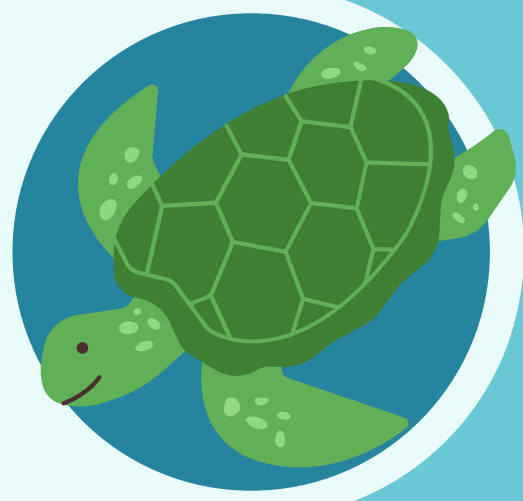


Limit public information

Threat actors use public information to target their victims.

Take time to verify

Stop, think, and verify sources before interacting.



Recognize and report

Report suspicious activity to abuse@rutgers.edu immediately.

